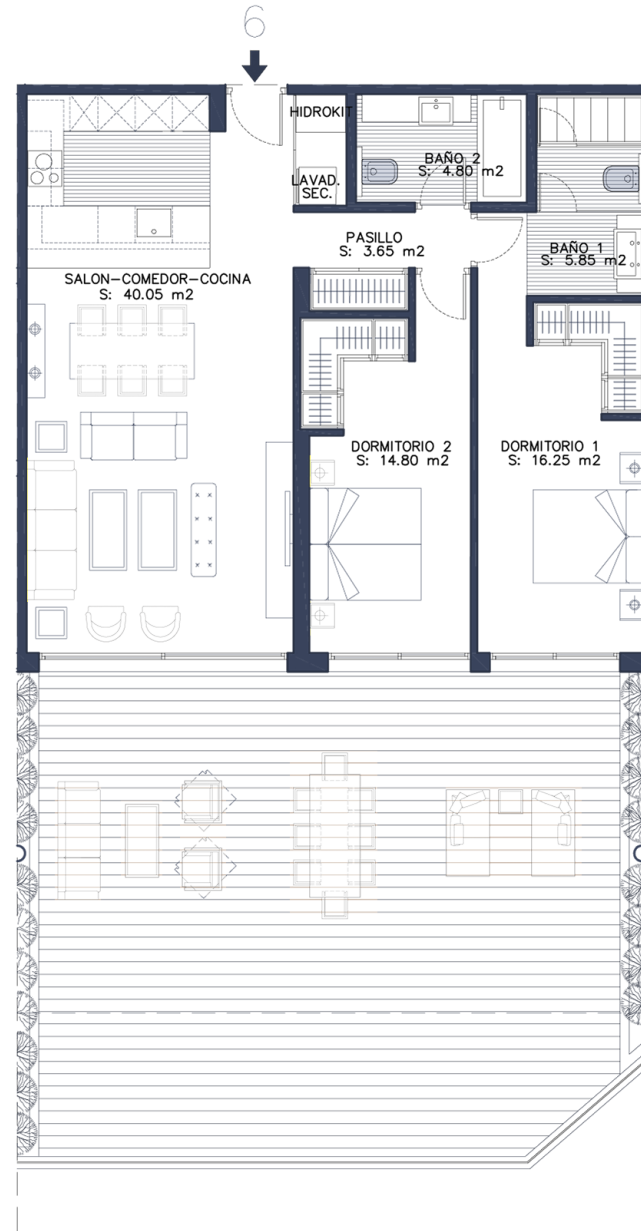
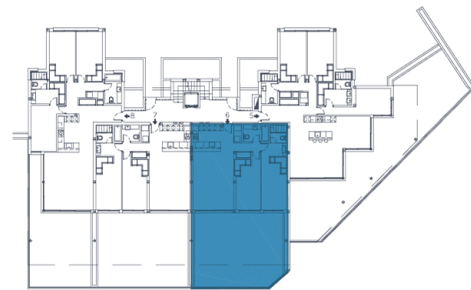
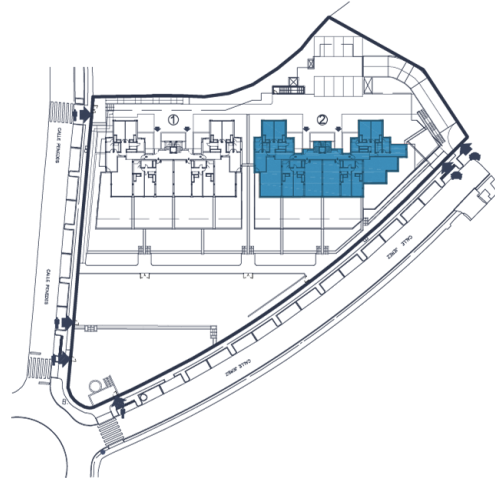
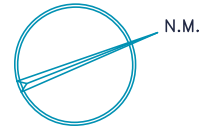




BLOQUE 2 - VIVIENDA 6
PLANTA PRIMERA
BLOCK 2 - APARTMENT 6
FIRST FLOOR



SUPERFICIES CONSTRUIDAS / BUILT AREA

SUPERFICIE VIVIENDA / INSIDE AREA	97.38 m ²
SUPERFICIE Z. COMÚN / COMMUNAL AREA	9.39 m ²
TOTAL / TOTAL	106.77 m ²
PORCHE / PORCH	57.20 m ²
TOTAL TERRAZA / TOTAL TERRACE	24.03 m ²
JARDÍN PRIVADO / PRIVATE GARDEN	81.23 m ²

SUPERFICIE ÚTIL SEGÚN DECRETO BOJA 218 / 2005
USABLE AREA IN ACCORDANCE WITH DECREE 218 / 2005

SUPERFICIE VIVIENDA / INSIDE AREA	85.40 m ²
SEGÚN DECRETO / IN ACCORDANCE WITH DECREE	93.94 m ²

- THIS DOCUMENT IS FOR INFORMATIONAL PURPOSES ONLY, AND MAY EXPERIENCE MODIFICATIONS DUE TO THE PROJECT'S TECHNICAL REQUIREMENTS.
 - ALL FURNISHINGS, INCLUDING THOSE IN THE KITCHEN, ARE FOR INFORMATIONAL PURPOSES ONLY. DOOR HANDLING AND THE DISTRIBUTION OF SANITARY FITTINGS ARE NOT BINDING.
 - THE SURFACE AREAS STATED ARE APPROXIMATE, AND MAY EXPERIENCE CHANGES FOR TECHNICAL REASONS DURING THE DEVELOPMENT AND EXECUTION OF THE BUILDING WORKS.
 - THE SURFACE AREAS INDICATED BELOW ARE CALCULATED IN ACCORDANCE WITH DECREE 218/2005, ON INFORMATION FOR CONSUMERS IN THE BUYING, SELLING AND LEASING OF PROPERTIES IN ANDALUSIA.

